



St. Edward's Church of England Academy

Supporting Pupils with Medical Conditions Policy

Approved by Trustees
Last reviewed in: March 2025
Next review due by: March 2026
Statutory Policy



St Edward's
Church of England
Academy

The Vision for Education at our Academy

Jesus says, "I have come that they may have life and have it in all its fullness."

John 10:10

Our school vision is to ensure that God's aspiration for us all, as expressed in Jesus's words from John 10:10, is reflected in our aspiration for all of our children and staff to experience a full and rich life of learning, growing, helping, and caring for each other.

We are an inclusive community where all are welcomed, supported and celebrated for all they are and for all they do. Our Academy is a place of, and a space for, flourishing and fulfilment because here...

...we are 10:10 people.

As a Christian Academy, we live and breathe our core values:

- Respect
- Courage
- Hope
- Friendship

"For I know the plans I have for you, declares the Lord, plans to prosper you and not to harm you, plans to give you hope and a future."

Jeremiah 29:11

***"Be strong and courageous.
Do not
be afraid; do not be
discouraged for
the Lord your God will be with
you wherever you go."***

Deuteronomy 31:6



***"I no longer call you
Followers. Instead I call
you friends."***

John 15:15

"Show proper respect to everyone"

1 Peter 2:17



Contents

The Vision for Education within a Church of England Academy	2
St Edward's Church of England Ethos and Values.....	2
Aims	4
Legislation and Statutory Responsibilities	4
Roles and Responsibilities	4
Equal Opportunities	6
Being Notified that a Child has a Medical Condition	6
Medical Care Plan	7
Managing Medicines	8
Emergency Procedures	10
Training	10
Record Keeping	11
Liability and Indemnity	11
Complaints	11
Monitoring Arrangements	11
Links to Other Policies	12
Appendix 1	13



1. Aims

This policy aims to ensure that:

- Pupils, staff and parents understand how our school will support pupils with medical conditions
- Pupils with medical conditions are properly supported to allow them to access the same education as other pupils, including school trips and sporting activities

The Trustee board will implement this policy by:

- Making sure sufficient staff are suitably trained
- Making staff aware of pupils' conditions, where appropriate
- Making sure there are cover arrangements to ensure someone is always available to support pupils with medical conditions
- Providing supply teachers with appropriate information about the policy and relevant pupils
- Developing and monitoring individual healthcare plans (MCPs)

The named person with responsibility for implementing this policy is Mrs K Smith.

2. Legislation and statutory responsibilities

This policy meets the requirements under [Section 100 of the Children and Families Act 2014](#), which places a duty on Trustee boards to make arrangements for supporting pupils at their school with medical conditions.

It is also based on the Department for Education's statutory guidance on [supporting pupils with medical conditions at school](#).

3. Roles and responsibilities

3.1 The Trustee Board

The Trustee board has ultimate responsibility to make arrangements to support pupils with medical conditions. The Trustee board will ensure that sufficient staff have received suitable training and are competent before they are responsible for supporting children with medical conditions.



3.2 The Principal

The Principal will:

- Make sure all staff are aware of this policy and understand their role in its implementation
- Ensure that there is a sufficient number of trained staff available to implement this policy and deliver against all medical care plans (MCPs), including in contingency and emergency situations
- Ensure that all staff who need to know are aware of a child's condition
- Take overall responsibility for the development of MCPs
- Make sure that school staff are appropriately insured and aware that they are insured to support pupils in this way
- Ensure that the school nursing service is contacted in the case of any pupil who has a medical condition that may require support at school, but who has not yet been brought to the attention of the school nurse
- Ensure that systems are in place for obtaining information about a child's medical needs and that this information is kept up to date

3.3 Staff

Supporting pupils with medical conditions during school hours is not the sole responsibility of one person. Any member of staff may be asked to provide support to pupils with medical conditions, although they will not be required to do so. This includes the administration of medicines.

Those staff who take on the responsibility to support pupils with medical conditions will receive sufficient and suitable training, and will achieve the necessary level of competency before doing so.

Teachers will take into account the needs of pupils with medical conditions that they teach. All staff will know what to do and respond accordingly when they become aware that a pupil with a medical condition needs help.

3.4 Parents

Parents will:

- Provide the school with sufficient and up-to-date information about their child's medical needs



- Be involved in the development and review of their child's MCP and may be involved in its drafting
- Carry out any action they have agreed to as part of the implementation of the MCP, e.g. provide medicines and equipment, and ensure they or another nominated adult are contactable at all times

3.5 Pupils

Pupils with medical conditions will often be best placed to provide information about how their condition affects them. Pupils should be fully involved in discussions about their medical support needs and contribute as much as possible to the development of their MCPs. They are also expected to comply with their MCPs.

3.6 School nurses and other healthcare professionals

Our school nursing service will notify the school when a pupil has been identified as having a medical condition that will require support in school. This will be before the pupil starts school, wherever possible. They may also support staff to implement a child's MCP.

Healthcare professionals, such as GPs and paediatricians, will liaise with the school's nurses and notify them of any pupils identified as having a medical condition. They may also provide advice on developing MCPs.

4. Equal opportunities

Our school is clear about the need to actively support pupils with medical conditions to participate in school trips and visits, or in sporting activities, and not prevent them from doing so.

The school will consider what reasonable adjustments need to be made to enable these pupils to participate fully and safely on school trips, visits and sporting activities.

Risk assessments will be carried out so that planning arrangements take account of any steps needed to ensure that pupils with medical conditions are included. In doing so, pupils, their parents and any relevant healthcare professionals will be consulted.

5. Being notified that a child has a medical condition

When the school is notified that a pupil has a medical condition, the process outlined below will be followed to decide whether the pupil requires an MCP.



The school will make every effort to ensure that arrangements are put into place within 2 weeks, or by the beginning of the relevant term for pupils who are new to our school.

See Appendix 1.

6. Medical Care Plans

The Principal has overall responsibility for the development of MCPs for pupils with medical conditions. This has been delegated to the Care Plan Coordinator and Health and Safety Coordinator.

Plans will be reviewed at least annually, or earlier if there is evidence that the pupil's needs have changed.

Plans will be developed with the pupil's best interests in mind and will set out:

- What needs to be done
- When
- By whom

Not all pupils with a medical condition will require an MCP. It will be agreed with a healthcare professional and the parents when an MCP would be inappropriate or disproportionate. This will be based on evidence. If there is no consensus, the Principal will make the final decision.

Plans will be drawn up in partnership with the school, parents and a relevant healthcare professional, such as the school nurse, specialist or paediatrician, who can best advise on the pupil's specific needs. The pupil will be involved wherever appropriate.

MCPs will be linked to, or become part of, any education, health and care (EHC) plan. If a pupil has SEN but does not have an EHC plan, the SEN will be mentioned in the MCP. The level of detail in the plan will depend on the complexity of the child's condition and how much support is needed. The trustee board, Principal and Health and Safety Coordinator will consider the following when deciding what information to record on MCPs:

- The medical condition, its triggers, signs, symptoms and treatments
- The pupil's resulting needs, including medication (dose, side effects and storage) and other treatments, time, facilities, equipment, testing, access to food and drink where this is used to manage their condition, dietary requirements and environmental issues, e.g. crowded corridors, travel time between lessons



- Specific support for the pupil's educational, social and emotional needs. For example, how absences will be managed, requirements for extra time to complete exams, use of rest periods or additional support in catching up with lessons, counselling sessions
- The level of support needed, including in emergencies. If a pupil is self-managing their medication, this will be clearly stated with appropriate arrangements for monitoring
- Who will provide this support, their training needs, expectations of their role and confirmation of proficiency to provide support for the pupil's medical condition from a healthcare professional, and cover arrangements for when they are unavailable
- Who in the school needs to be aware of the pupil's condition and the support required
- Arrangements for written permission from parents and the Principal for medication to be administered by a member of staff, or self-administered by the pupil during school hours
- Separate arrangements or procedures required for school trips or other school activities outside of the normal school timetable that will ensure the pupil can participate, e.g. risk assessments
- Where confidentiality issues are raised by the parent/pupil, the designated individuals to be entrusted with information about the pupil's condition
- What to do in an emergency, including who to contact, and contingency arrangements

7. Managing medicines

Prescription and non-prescription medicines will only be administered at school:

- When it would be detrimental to the pupil's health or school attendance not to do so
and
- Where we have parents' written consent

The only exception to this is where the medicine has been prescribed to the pupil without the knowledge of the parents.

Pupils under 16 will not be given medicine containing aspirin unless prescribed by a doctor.

Anyone giving a pupil any medication (for example, for pain relief) will first check maximum dosages and when the previous dosage was taken. Parents will always be informed.



The school will only accept prescribed medicines that are:

- In-date
- Labelled
- Provided in the original container, as dispensed by the pharmacist, and include instructions for administration, dosage and storage

The school will accept insulin that is inside an insulin pen or pump rather than its original container, but it must be in date.

All medicines will be stored safely. Pupils will be informed about where their medicines are at all times and be able to access them immediately. Medicines and devices such as asthma inhalers, blood glucose testing meters and adrenaline pens will always be readily available to pupils and not locked away.

Medicines will be returned to parents to arrange for safe disposal when no longer required.

7.1 Controlled drugs

[Controlled drugs](#) are prescription medicines that are controlled under the [Misuse of Drugs Regulations 2001](#) and subsequent amendments.

All controlled drugs are kept in a secure cupboard in the school office and only named staff have access.

Controlled drugs will be easily accessible in an emergency and a record of any doses used and the amount held will be kept.

7.2 Pupils managing their own needs

Pupils who are competent will be encouraged to take responsibility for managing their own medicines and procedures. This will be discussed with parents and it will be reflected in their MCPs.

Pupils will be allowed to carry their own medicines and relevant devices wherever possible. Staff will not force a pupil to take a medicine or carry out a necessary procedure if they refuse, but will follow the procedure agreed in the MCP and inform parents so that an alternative option can be considered, if necessary.

7.3 Unacceptable practice

School staff should use their discretion and judge each case individually with reference to the pupil's MCP, but it is generally not acceptable to:



- Prevent pupils from easily accessing their inhalers and medication, and administering their medication when and where necessary
- Assume that every pupil with the same condition requires the same treatment
- Ignore the views of the pupil or their parents
- Ignore medical evidence or opinion (although this may be challenged)
- Send children with medical conditions home frequently for reasons associated with their medical condition or prevent them from staying for normal school activities, including lunch, unless this is specified in their MCPs
- If the pupil becomes ill, send them to the school office or medical room unaccompanied or with someone unsuitable
- Penalise pupils for their attendance record if their absences are related to their medical condition, e.g. hospital appointments
- Prevent pupils from drinking, eating or taking toilet or other breaks whenever they need to in order to manage their medical condition effectively
- Require parents, or otherwise make them feel obliged, to attend school to administer medication or provide medical support to their pupil, including with toileting issues. No parent should have to give up working because the school is failing to support their child's medical needs
- Prevent pupils from participating, or create unnecessary barriers to pupils participating in any aspect of school life, including school trips, e.g. by requiring parents to accompany their child
- Administer, or ask pupils to administer, medicine in school toilets

8. Emergency procedures

Staff will follow the school's normal emergency procedures (for example, calling 999). All pupils' MCPs will clearly set out what constitutes an emergency and will explain what to do.

If a pupil needs to be taken to hospital, staff will stay with the pupil until the parent arrives, or accompany the pupil to hospital by ambulance.

9. Training

Staff who are responsible for supporting pupils with medical needs will receive suitable and sufficient training to do so.



The training will be identified during the development or review of MCPs. Staff who provide support to pupils with medical conditions will be included in meetings where this is discussed.

The relevant healthcare professionals will lead on identifying the type and level of training required and will agree this with the Principal or Health and Safety Coordinator. Training will:

- Be sufficient to ensure that staff are competent and have confidence in their ability to support the pupils
- Fulfil the requirements in the MCPs
- Help staff to have an understanding of the specific medical conditions they are being asked to deal with, their implications and preventative measures

Healthcare professionals will provide confirmation of the proficiency of staff in a medical procedure, or in providing medication.

All staff will receive training so that they are aware of this policy and understand their role in implementing it, for example, with preventative and emergency measures so they can recognise and act quickly when a problem occurs. This will be provided for new staff during their induction.

10. Record keeping

The trustee board will ensure that written records are kept of all medicine administered to pupils for as long as these pupils are at the school. Parents will be informed if their pupil has been unwell at school.

MCPs are kept in a readily accessible place which all staff are aware of.

11. Liability and indemnity

The trustee board will ensure that the appropriate level of insurance is in place and appropriately reflects the school's level of risk.

Insurance

- a) Teachers who undertake responsibilities within this policy will be assured by the Principal that they are covered by the Academy's insurance.
- b) Full written policy documents are available to be viewed by members of staff on request via the School Business Manager.



12. Complaints

Parents with a complaint about their child's medical condition should discuss these directly with their child's Pastoral Leader in the first instance. If the Pastoral Leader cannot resolve the matter, they will direct parents to the school's complaints procedure.

13. Monitoring arrangements

This policy will be reviewed and approved by the trustee board every year.

14. Links to other policies

This policy links to the following policies:

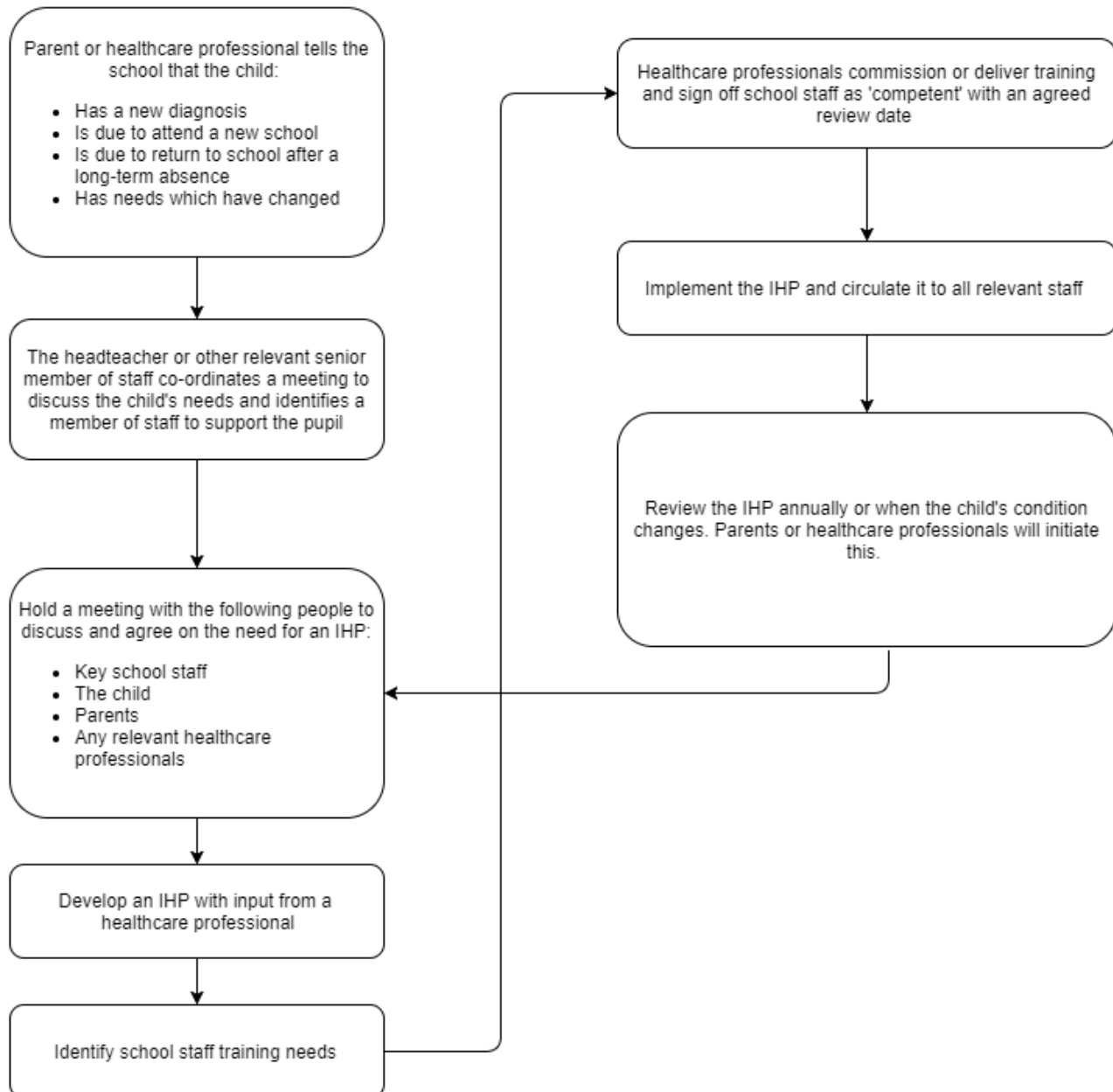
- Accessibility Plan
- Complaints Policy
- Equality Information and Objectives
- First Aid Policy
- Health and Safety Policy
- Safeguarding (incorporating child protection) Policy
- Special Educational Needs Information Report and Policy

Definitions

- 'Parent(s)' is a wide reference not only to a pupil's birth parents but to adoptive, step and foster parents, or to the other persons who have parental responsibility for, or who have care of a pupil.
- 'Medical condition' for these purposes is either a physical or a mental health medical condition as diagnosed by a healthcare professional which results in the child requiring special adjustments for the school day, either on-going or intermittently. This includes; a chronic or short-term condition, a long-term health need or disability, an illness, injury or recovery from treatment or surgery.
- 'Medications' defined as any prescribed or over the counter treatment.
- 'Prescription medication' is defined as any drug or device prescribed by a doctor, prescribing nurse or dentist and dispensed by a pharmacist with instructions for administration, dose and shortage.
- A 'staff members' is defined as any member of staff employed at St-Edwards Church of England Academy.



Appendix 1: Being notified a child has a medical condition



*IHP – Individual Healthcare Plan or EHCP – Educational Health Care Plan