



Cornwall 2023

Sunday 2nd July –
Friday 7th July

Staff

Bus 1

- Mrs Rose
(Bus 1 leader and trip organiser)
- Mr Braxton
- Mrs Bentley
- Miss Douglas
- Mrs Akrill (volunteer)





Bus 2

- Mrs Collier
(Bus 2 leader and trip administrator)
- Mr Ball
- Miss Towers
- Mr Tunstall

Money

- 6 Envelopes – with days of week written on maximum £7 per day or Go Henry card / debit
- **Sunday's kept with child** for lunch at services
- Monday – Friday envelopes given to leader on bus
- Some places are card only eg Land's End



Facebook updates

- No news is good news! Wi-fi limited in hostel
- School emergency phone number
- Daily updates with a few photos
- Not every child able to be caught on camera



Journey down

- Leave bus park at 9.30 am on Sunday
- Give labelled medication to group leader
- Advise if child needs travel sickness bands
- Stop over at motorway services
- Arrive around 4pm in Penzance



- Packed lunch, sweets and snacks kept in bag
- Children must bring school hoodie for services visit

Hostel

YHA Penzance

- Rooms already allocated
- Unpacking
- Making beds
- Exploring hostel
- Room inspections
- Pupils will be reminded of behaviour expectations



Meals

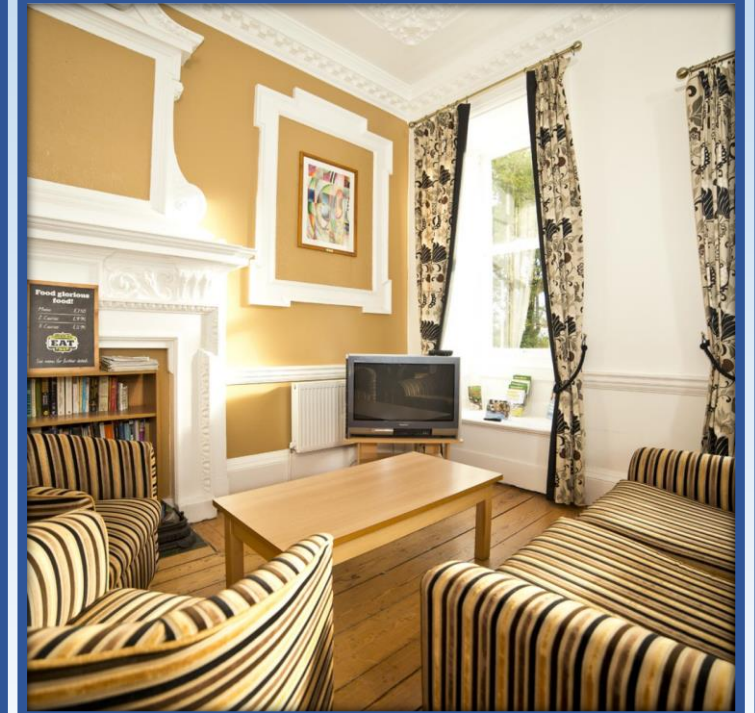
- In two sittings (bus groups)
- Full English breakfast plus cereals, toast, croissants etc
- Packed lunch – sandwich, crisps, fruit, cake or biscuit
- Two course dinner
- Extensive choices
- Meals already selected





Free time

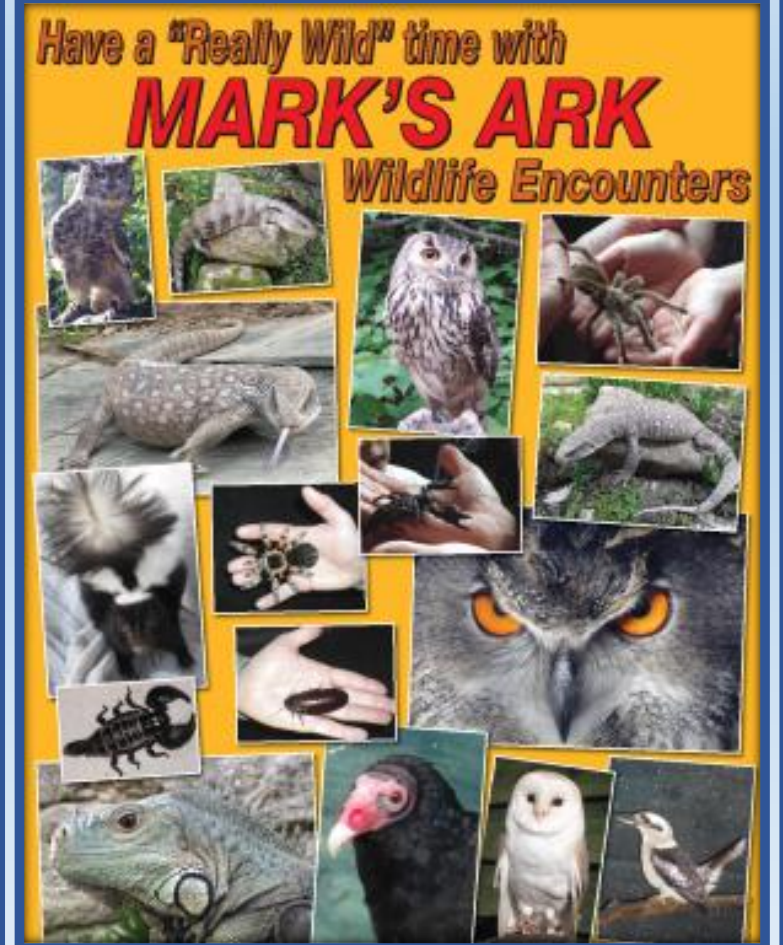
- Lounge with tv and board games
- Games room
- Large field for ball games





Mark's Ark

- Opportunity to observe/hold wildlife
- Interesting fact filled outdoor lesson



Marazion Beach

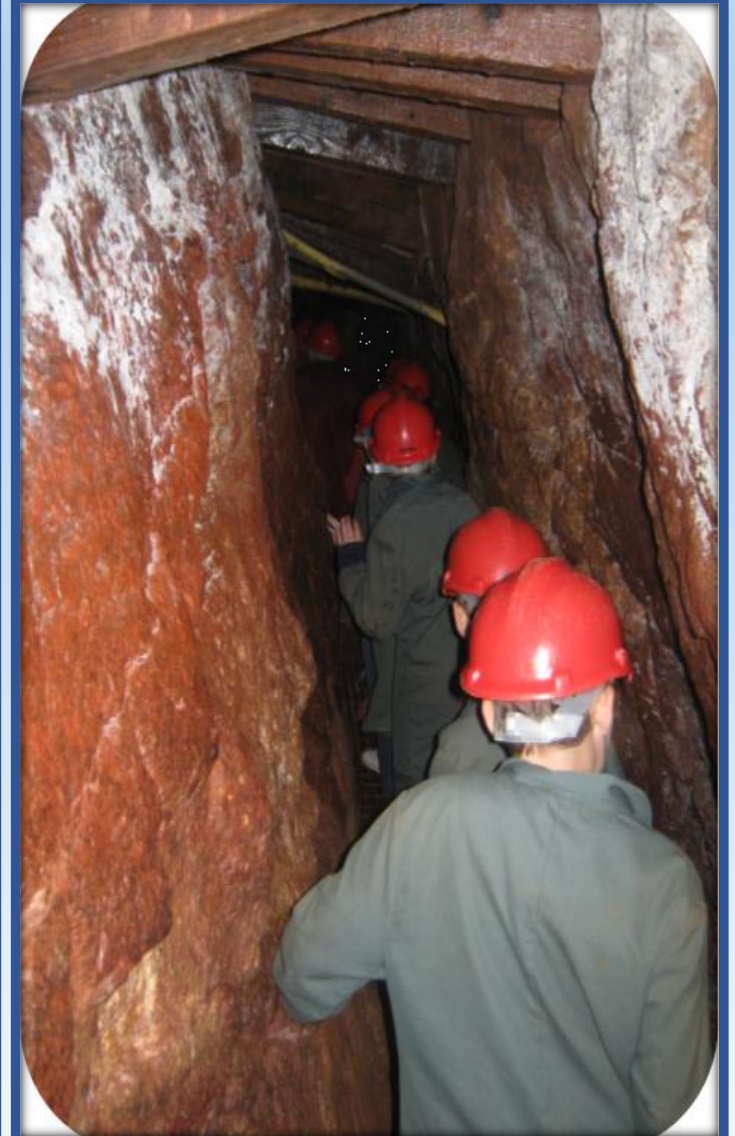


- Visit most evenings
- Allowed to paddle
- Beach games supplied
- Flip flops/sliders advisable



Geevor Tin Mine

- Understanding how miners worked
- Chance to enter underground mine
- Panning for semi-precious stones



Land's End

- Great photo opportunity
- Brief visit after tin mine



St Ives

- Tate Modern
- Hepworth Sculpture Garden
- Lunch on the beach
- Watch out for seagulls!



Maritime Museum

- Learn about boat construction
- Design and build own boat
- Race crafts on indoor pool to win prizes



Eden Project

- Eden staff-led lesson in classroom
- Understanding of Fairtrade
- Learn about sustainability
- Scavenger hunt throughout site
- Chance to explore biomes
- Great for souvenirs or presents



Return home

- Leave Penzance between 9am and 10am
- Stop off at two services
- Arrive back approx. 6pm
- Updates via school Facebook page



Summary

- Please make sure you have a kit list – medical form due in over next 2 weeks before we go!
- The phone number for contact during the trip is on the kit list
- Kit list – sunscreen and drinks bottle! Medication to staff on morning of departure.
- Please make group leader aware of any pertinent info
- Cashless at some places